

Old Santa Fe Railroad Depot (Old Depot Museum)

Historic and Present Day Images



Exterior Damage to Terne Metal Roof

The discolored patches are places where the metal has lost all of its coating and is completely bare.

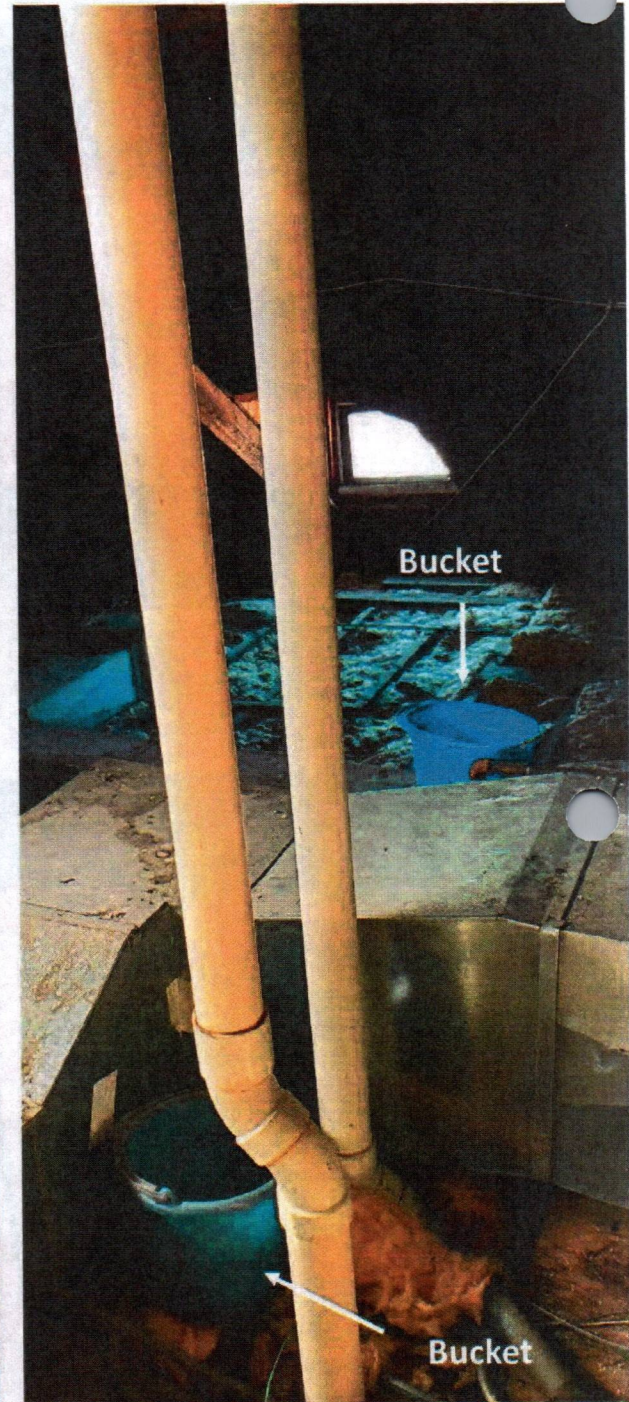


Closer view of the discolored patches where the coating has been lost.



Examples of interior damage

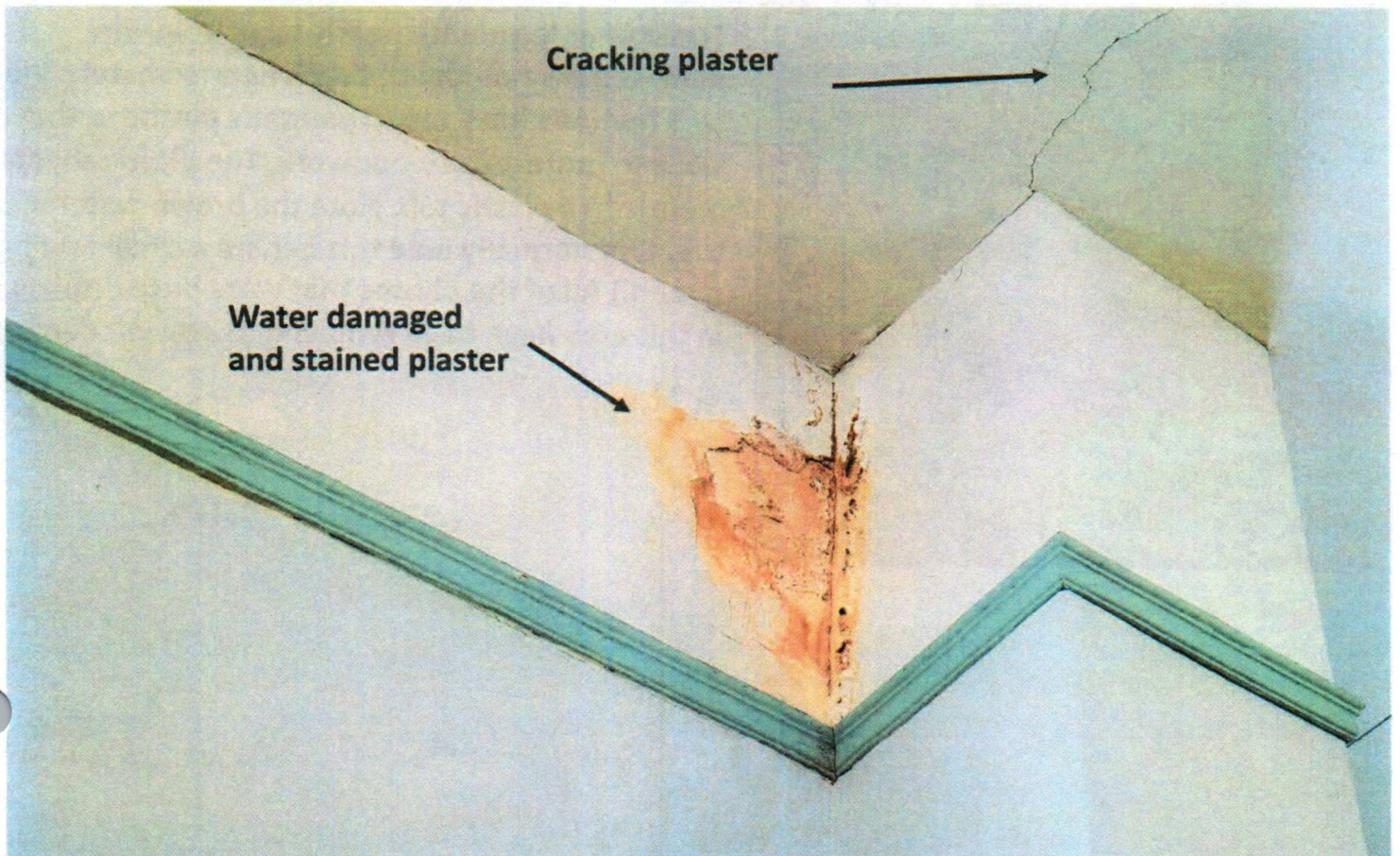
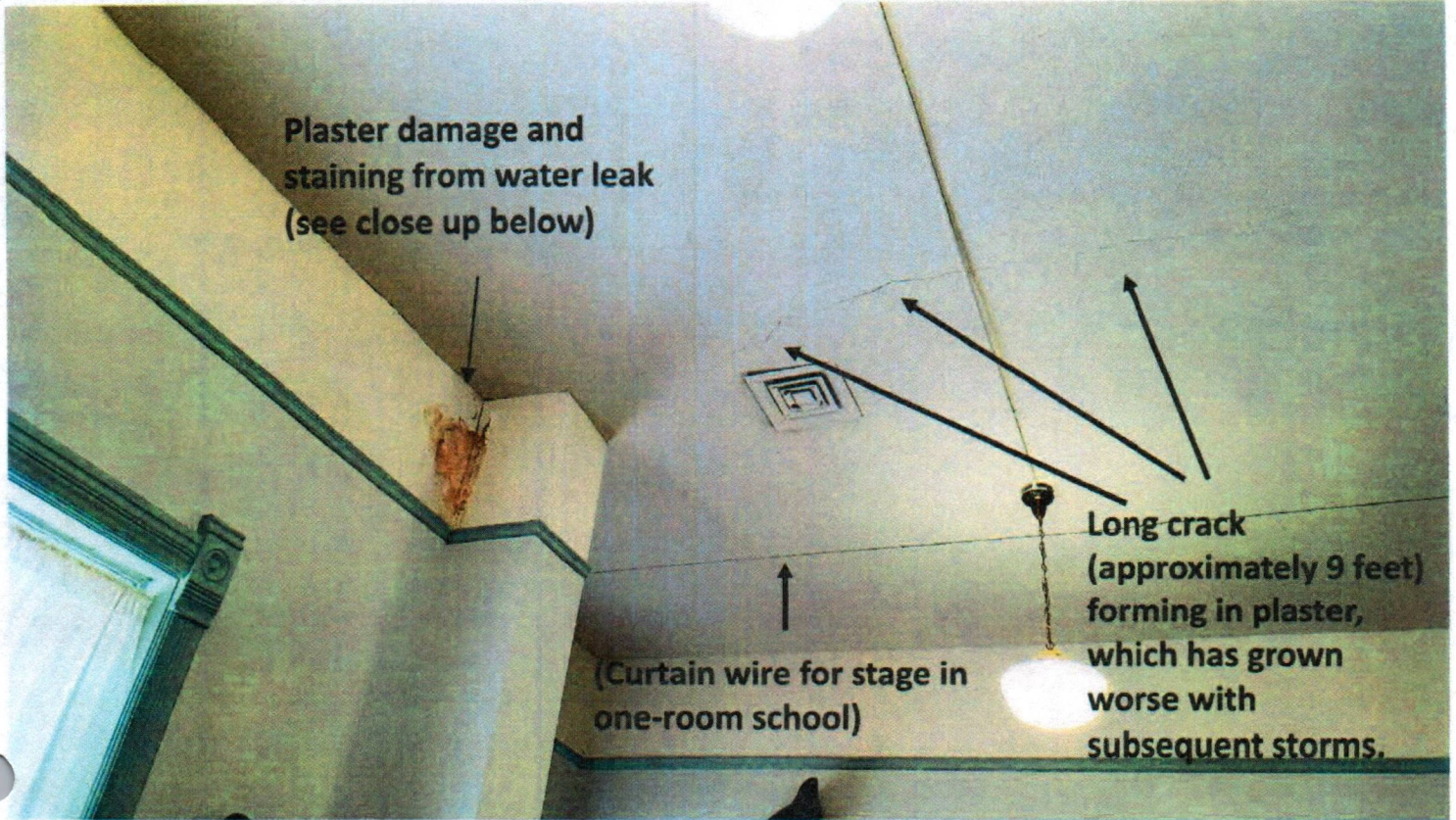
Attic above second floor



The attic is difficult to photograph on cloudy days, but these two photos demonstrate the myriad of water leaks. The photo on the left shows the attic under the center dormer on the east side. The photo on the right shows the HVAC unit near the southwest dormer.

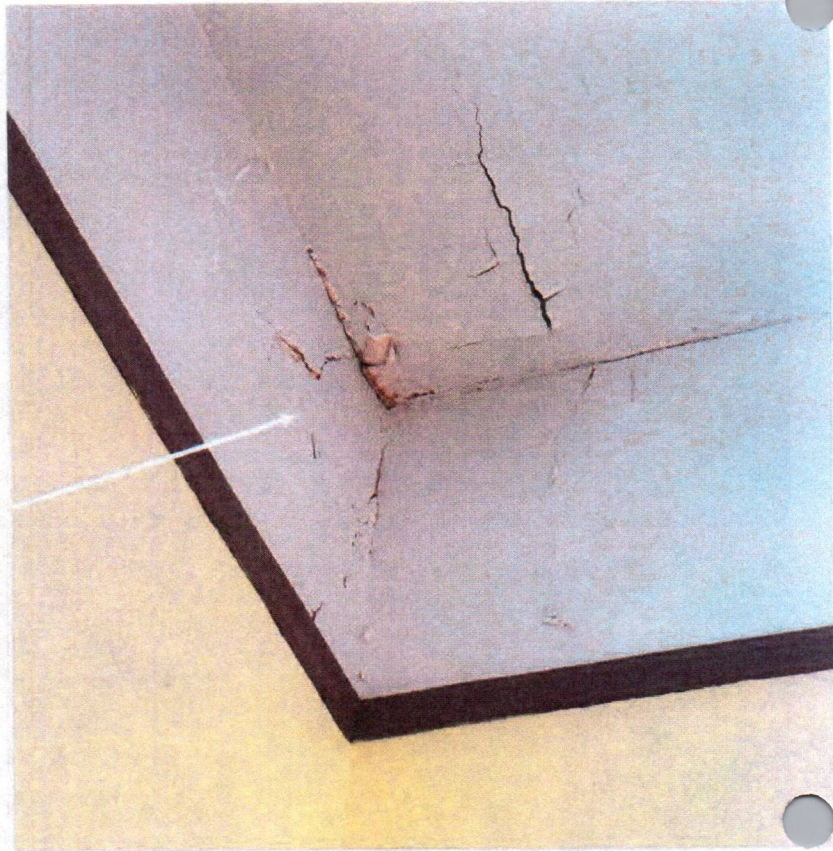
Examples of interior damage

One-Room School exhibit/program space, second floor



Examples of interior damage

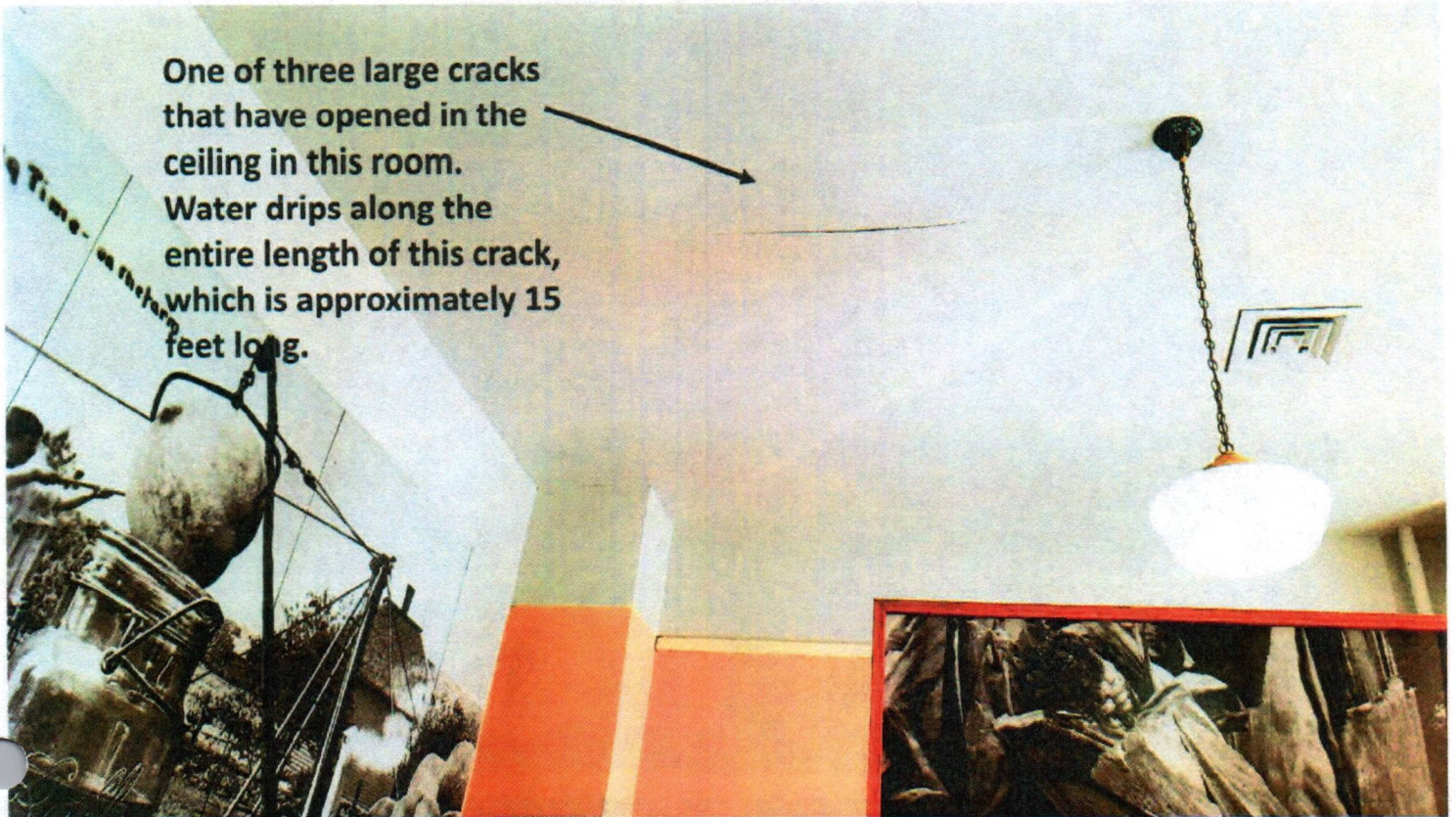
Soda Fountain Room, second floor



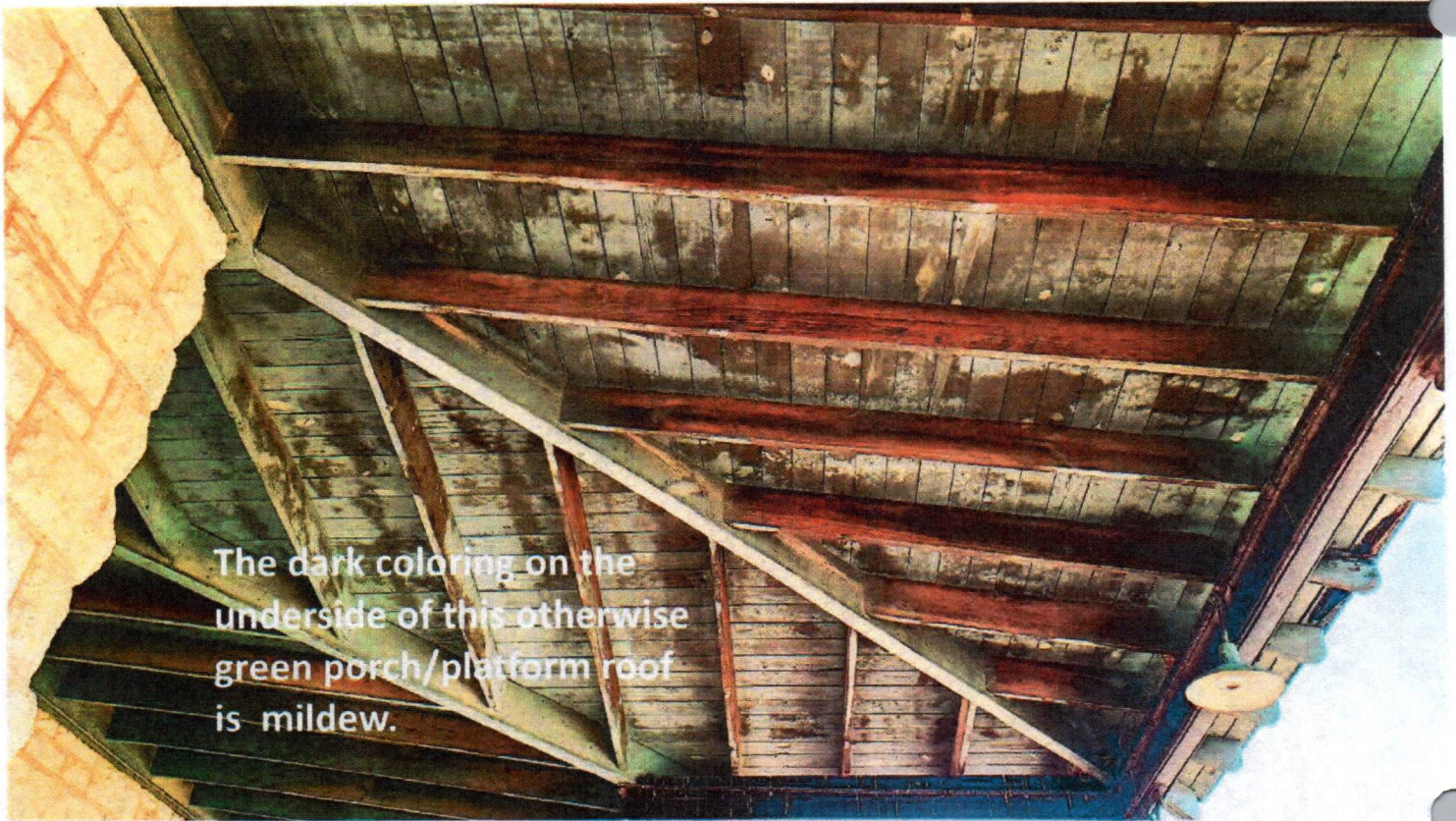
This corner leaks with nearly every rain. The damaged area on the ceiling is approximately 3 feet by 3 feet. We have taped painter's plastic to the walls to protect the woodwork. The plastic sheets drain into a plastic tub. Note the brown water in the tub. (We normally hide this behind a small folding screen.) All of the photos that were once displayed in this area have been removed to prevent damage.

Examples of interior damage

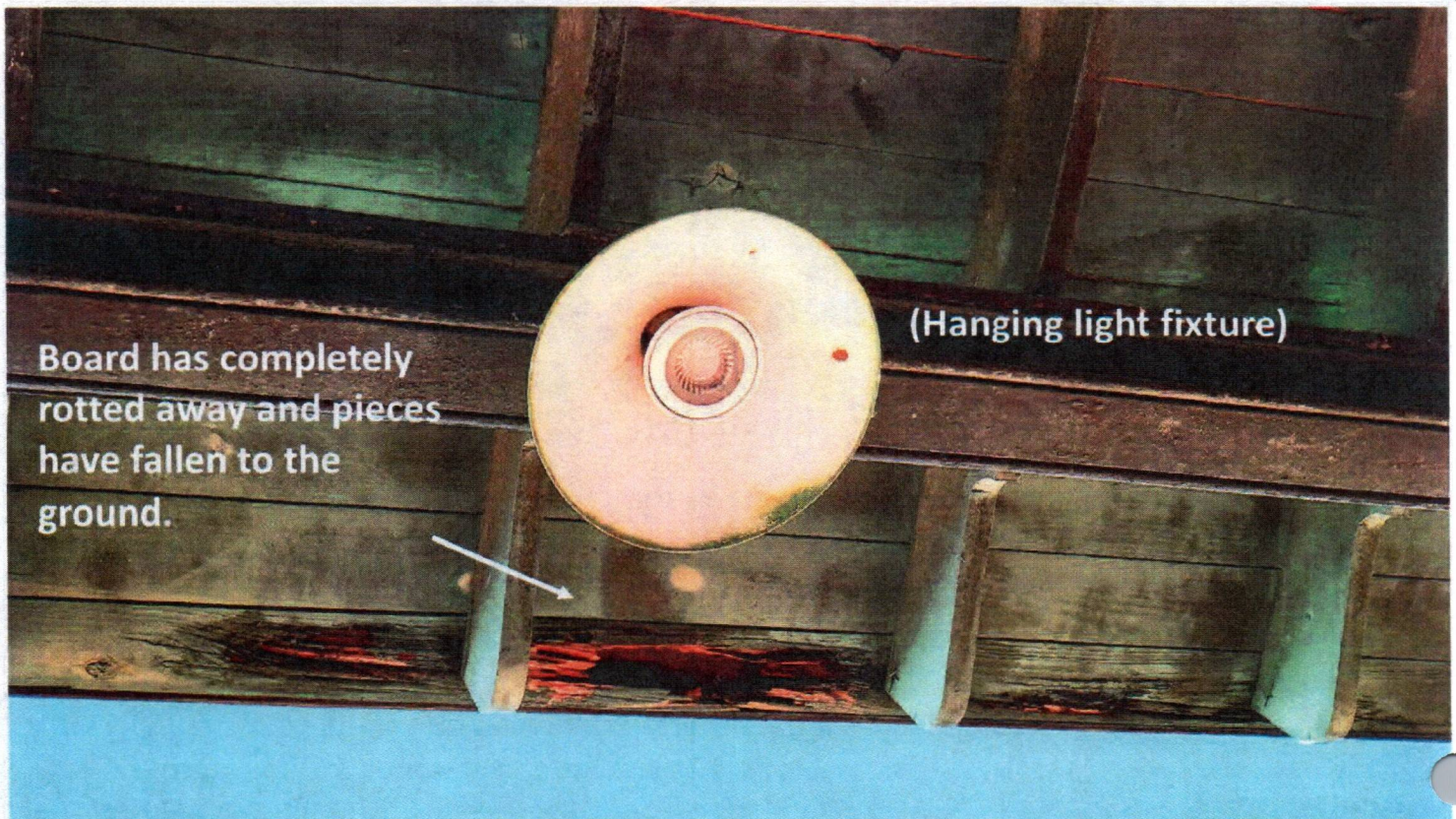
Photographer Dad Martin exhibit, second floor



Exterior Damage to Porch/Platform Roof



The dark coloring on the underside of this otherwise green porch/platform roof is mildew.



(Hanging light fixture)

Board has completely rotted away and pieces have fallen to the ground.

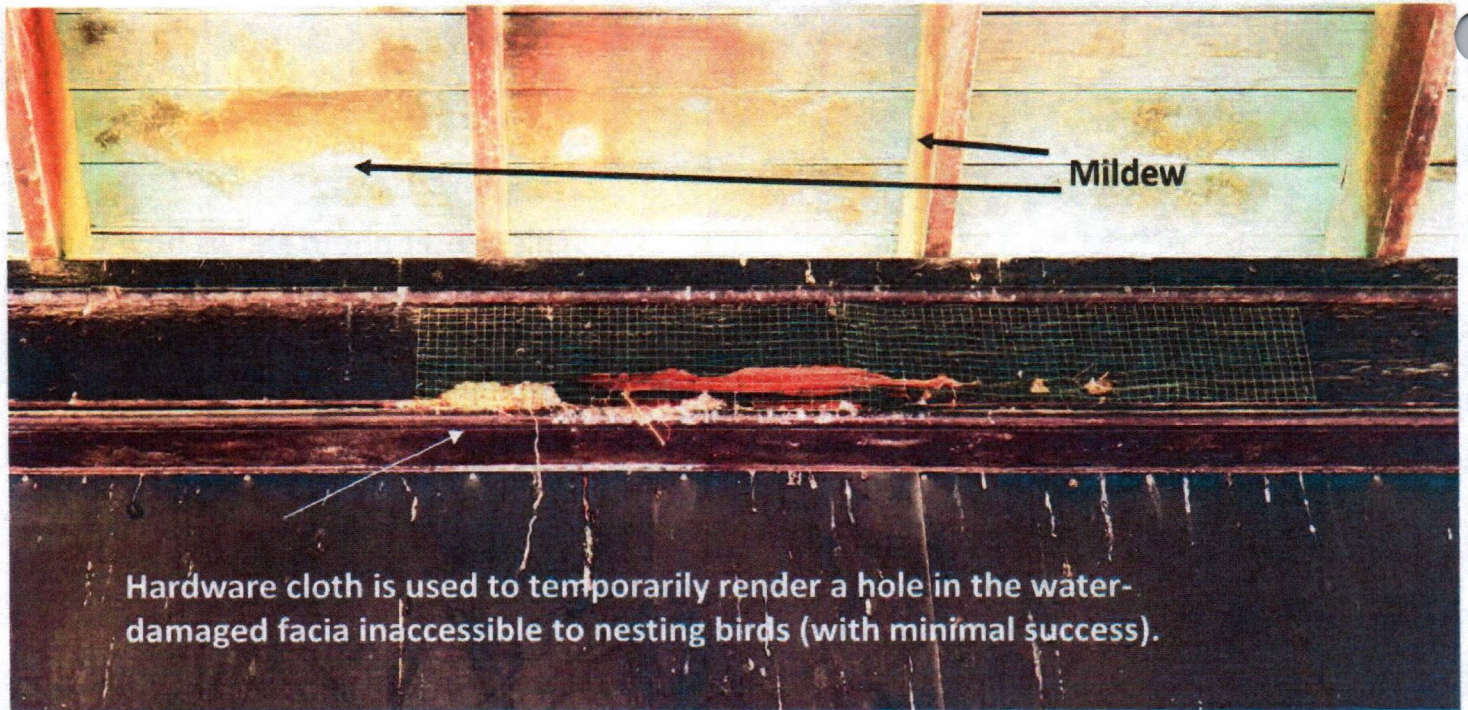
Exterior Damage to Porch/Platform Roof



This winter photo shows how the water drips straight down the edge of the roof instead of away from the roofline. Some of the water wicks into the woodwork, and the rest pounds into the bricks below, causing damage to the bricks (see photo below).



Exterior Damage to Porch/Platform Roof



Exterior Damage to South Gable

